



## Research Article

# FORMULATION, EVALUATION AND ANTIMICROBIAL ACTIVITY OF EVOLVULUS ALSINOIDES CREAM

**Submission Date:** May 03, 2022, **Accepted Date:** May 12, 2022,

**Published Date:** May 24, 2022 |

**Crossref doi:** <https://doi.org/10.37547/tajjir/Volume04Issue05-02>

**Journal Website:**  
<https://theamericanjournals.com/index.php/tajjir>

**Copyright:** Original content from this work may be used under the terms of the creative commons attributes 4.0 licence.

### Athulya

Dr. Joseph Mar Thoma Institute of Pharmaceutical Sciences And Research, Kattanam, Alappuzha, Kerala, India

### Ashna Aji Haneef

Dr. Joseph Mar Thoma Institute of Pharmaceutical Sciences And Research, Kattanam, Alappuzha, Kerala, India

### Ashly S Abraham

Dr. Joseph Mar Thoma Institute of Pharmaceutical Sciences And Research, Kattanam, Alappuzha, Kerala, India

### Anjana S

Dr. Joseph Mar Thoma Institute of Pharmaceutical Sciences And Research, Kattanam, Alappuzha, Kerala, India

### Abini Daniel M

Dr. Joseph Mar Thoma Institute of Pharmaceutical Sciences And Research, Kattanam, Alappuzha, Kerala, India

### Ansa Mathew

Dr. Joseph Mar Thoma Institute of Pharmaceutical Sciences And Research, Kattanam, Alappuzha, Kerala, India

## ABSTRACT

Evolvulus alsinoides, commonly known as dwarf morning-glory and slender dwarf morning-glory, is a flowering plant from the family Convolvulaceae. Traditionally this plant is used as a blood purifier, brain tonic, an antimicrobial agent and for memory loss. This work is done to determine whether the cream prepared by the aqueous extract of Evolvulus alsinoides has antimicrobial activity. The dried plant leaves are extracted using water as the solvent. The



extractive value is calculated and was found to be 12.5% $\frac{W}{W}$ . The phytochemical screening of the extract was performed and it contains slight amount of glycosides, carbohydrates, proteins, alkaloids and tannins. Then using that aqueous extract, a cream was formulated and its evaluation was carried out. From the evaluation the cream was found to be light brown in color with a characteristic odour and have smooth texture. pH and viscosity of the cream are 5.58 and 13254mpas respectively. Cream was homogeneous by its visual appearance with a smooth and good consistency. On application, the cream was non-slippery, smooth and easily removable, also does not show any irritation on skin. After that the antimicrobial activity of the cream was tested using agar well diffusion method. Gentamicin was used as the standard reference drug. The antimicrobial sensitivity was determined using zone of inhibition. In our study, the cream containing aqueous extract displayed antimicrobial activity against *Staphylococcus aureus* and *Escherichia coli*. The cream was found to be more active against gram-negative (*Escherichia coli*) bacteria. The identified phytochemical compounds viz., glycosides, tannins and alkaloids may be responsible for the antimicrobial activity of *Evolvulus alsinoides*.

### KEYWORDS

*Evolvulus alsinoides* (EA); Cream; Fusion method; Brookfield viscometer; Antimicrobial activity; Lawn culture; Agar diffusion method; Muller Hinton Agar (MHA); *Staphylococcus aureus*; *Escherichia coli*.

### INTRODUCTION

Herbalism is the study of pharmacognosy and the use of medicinal plants, which are basis of traditional medicine. Herbal drugs are types of medicine that uses roots, stems, leaves, flowers, seeds, or other parts of plants to improve health, prevent diseases and treat illness. Herbal preparations are formulations made from one or more herbs or processed herbs with the help of different processes like infusion, decoction, maceration, concentration, distillation, purification etc., which provides specific nutritional, cosmetic or other benefits meant for diagnose, treat, mitigate diseases of human beings or animals or to alter the structure or physiology of human beings or animals. Herbal medicines have its roots in every culture around the world. There are many different systems of traditional medicine and practices of each are influenced by social conditions, environmental and

geographic location, but these systems all agree on a holistic approach to life. One of the greatest benefits associated with herbal medicine is the non-existence of side effects and also, they tend to offer long lasting benefits in terms of overall wellness, but reports on serious reactions are indicating in some cases which leads to the need for development of effective marker system for isolations and identification of the individual components. Standards for herbal drugs are being developed worldwide but as yet there is no common consensus as to how these should be adopted. Standardization, stability and quality control for herbal drugs are feasible, but difficult to accomplish. Further, the regulation of these drugs is not uniform across countries. There are variations in the methods across medicine systems and countries in achieving stability and quality control the present study attempts to



identify the evolution of technical standards in manufacturing and the regulatory guideline development for commercialization of herbal drugs. Also cost effectiveness is another benefit of herbal preparations.[1]

In India more than 70% of population use herbal drugs nowadays for their health. There is vast experience-based evidence for many of these drugs. There are also a number of institutes or universities in India carrying research on herbal drugs, medicinal plants and their benefits. These herbal drugs are also rich sources of beneficial compound including antioxidants and components used in functional foods. Newer approaches utilizing collaborative research and modern technology in combination with established traditional health principle will yield rich dividends in the near future in improving health, especially among people who do not have access to the use of costlier western system of medicine.[1]

Standardization of herbal drugs is also very important. Standardisation is the first step for the establishment of a consistent biological activity, chemical profile, or simply a quality assurance program for production and manufacturing. Mainly the following parameters like authentication, physical parameters, qualitative and quantitative analysis, microbiological contamination, pesticide residue, heavy metal analysis, etc are considered for standardisation of herbal drugs. Nowadays newer and advanced methods are also available like fluorescence quenching, the combination of chromatographic and spectrophotometric methods, biological assays, use of biomarkers in fingerprinting etc.[1]

Cream is defined as semisolid emulsions which are oil in water or water in oil type which are intended for external application on skin or accessible mucous membrane which provide localized or systemic effects

at site of applications. Its main ability is to remain for a longer period of time at the site of application. Cream protects the skin from various environmental conditions and also provides soothing effect to the skin. Different varieties of creams like cleansing cream, cold creams, vanishing creams, foundation creams, night creams, body creams etc are available in the markets.[3] Herbal creams are creams which contains one or more herbal constituents in it. Nowadays herbal creams have considerably wide attention because of their good activity and comparatively lesser or nil side effects and skin irritations. General ingredients used in the preparation of skin creams include water, oil, fats or waxes, mineral oil like liquid paraffin or liquid petroleum, glyceride oil, vegetable oil, colourants, emollients, humectants, perfumes, preservatives, etc. In addition to these ingredients active pharmaceutical ingredients should also be included if the cream is intended for any disease condition. The general processes of preparation of a cream includes four individual operations like preparation of oil phase, hydration of aqueous phase ingredients, forming the emulsion and finally dispersion of the active ingredients.[2]

*Evolvulus alsinoides*, commonly known as dwarf morning-glory and slender dwarf morning-glory, is flowering plant from the family Convolvulaceae. It has a natural pantropical distribution encompassing tropical and warm-temperate regions of Australasia, Indomalaya, Polynesia, Sub-Saharan Africa and the Americas. It is one of the plants included in Dasapushpam, the ten sacred flowers of Kerala. Chemical compounds isolated from *E. alsinoides* include scopoletin, umbelliferone, scopolin and 2-methyl-1,2,3,4-butanetetrol.[4]

The scientific classification of *Evolvulus alsinoides* is as follows:

- Kingdom: Plantae
  - Class: Tracheophytes, Angiosperms, Eudicots, Asterids
  - Order: Solanales
  - Family: Convolvulaceae
  - Genus: Evolvulus
  - Species: alsinoides
- Varieties: E. alsinoides, E. decumbens, E. rotundifolia



Figure 1: Evolvulus Alsinoides

Therapeutic uses of this plant include:

- Whole plant is used in form of decoction for nervous disabilities and memory loss.
- Used as blood purifier and in bleeding piles.
- The fresh flowers with sugar are eaten as a brain tonic.
- The leaves are made into cigarettes and smoked in chronic bronchitis and asthma.
- It also improves complexion, voice and cures from intestinal worms.
- It promotes 'medha', the power of memory.[4]

**MATERIALS AND METHODS**

**Instruments**

| SL. NO | INSTRUMENTS                 | PURPOSE                                       |
|--------|-----------------------------|---|
| 1      | Electronic weighing balance | Weighing ingredients.                         |
| 2      | Heating mantle              | Evaporating filtrate to obtain crude extract. |
| 3      | Brookfield viscometer       | Determining viscosity of cream.               |
| 4      | Ph meter                    | Determining ph of cream.                      |



|   |                  |                               |
|---|------------------|-------------------------------|
| 5 | Laminar air flow | Creating aseptic environment. |
| 6 | Hot air oven     | Sterilizing glassware.        |
| 7 | Incubator        | Growing cell cultures.        |
| 8 | Autoclave        | Sterilizing media.            |

Table 1: List of Instruments

**Chemicals**

| SL. NO | CHEMICALS                                 | USE                               |
|--------|---|-----------------------------------|
| 1      | Beeswax liquid paraffin                   | For preparing oil phase of cream. |
| 2      | Water<br>Borax<br>Aqueous extract of drug | For preparing aqueous phase.      |
| 3      | Peptone water                             | Preparing bacterial culture       |
| 4      | Muller-Hinton agar                        | Preparing solid culture media.    |

Table 2: List of Chemicals

**Other Requirements**

Mortar and pestle, China dish, beaker, funnel, filter paper, iodine flask, desiccator, water bath, thermometer, glass slide, petri plates, test tube, micropipette, antibiotic disk.

**EXTRACTION**

Extraction is the method of separation of medicinally active constituents of a plant or animal tissue from an inert or inactive components by using a selective liquid solvents. Extracts are preparations of crude drugs which contains all constituents which are soluble in

solvents. Solid residue obtained after extraction is called marc and the solvent used for extraction is called menstrum. The main steps involved in the extraction are size reduction, extraction, filtration, concentration and drying. The commonly used extraction methods are infusion, decoction, percolation, maceration etc. [26]

**Preparation of aqueous extract**

12.5 g of powdered leaves and twigs of *Evolvulus alsinoides* was dispensed in 250ml of distilled water in

a 250ml conical flask and the same procedure is followed for the rest 87.5g of powder. The mixture was shaken vigorously and then allowed to stand for 24 hours. It was shaken again and filtered through

What'smann filter paper No.1 into a beaker. Filtrate was evaporated at 40°C on a water bath to obtain the solid crude extract.



Figure 2: Aqueous Extract of E. Alsinoides

#### Extractive value

Extractive values are used for evaluation of crude drugs when they cannot be estimated by any other method. Extractive values by different solvents are used to assess quality, purity and to detect adulteration due to exhausted and incorrectly processed drugs. There are 3 types of extractive values and they are water soluble, alcohol soluble and ether soluble extractive values.[27]

Mix 1ml of Fehling's A and 1ml of Fehling's B solution, boil for 1min . Add equal volume of test solution. Heat in a boiling water bath for 5 to 10 minutes. First yellow, then brick red precipitate is observed.

#### c) Benedict's test:

Mix equal volume of Benedict reagent and test solution in test tube. Heat in boiling water bath for 5 min. Solution appears green, yellow or red depending on amount of reducing sugar present in test solution.

#### d) Barfoed's test:

Mix equal volume of Barfoed's reagent and test solution. Heat for 1 to 2 min in boiling water bath and cool. Red precipitate is observed.[25]

#### PRELIMINARY PHYTOCHEMICAL SCREENING

##### 1) Tests for carbohydrates

###### a) Molisch's test:

To 2 to 3 ml of aqueous extract add few drops molisch reagent, shake and add conc. H<sub>2</sub>SO<sub>4</sub> from the sides of the test tube. Violet ring is formed at the junction of two liquids.

###### b) Fehling's test:

##### 2) Tests for proteins

###### a) Biuret test:

To 3ml of test solution add 4% NaOH and few drops of 1% CuSO<sub>4</sub> solution, violet or pink colour appears.

b) Million's test:

Mix 3ml test solution with 5ml of Million's reagent. White precipitate. Warm, precipitate turns brick red or the precipitate dissolves giving red colored solution.

c) Ninhydrin test :

Heat 3ml test solution and 3 drops of 5% Ninhydrin solution in boiling water bath for 10min . Purple or bluish colour appears.[25]

3) Tests for glycosides

a) Test for anthraquinone glycosides

i. Borntrager's test: To 3ml extract add dil. H<sub>2</sub>SO<sub>4</sub>. Boil and filter. To cold filtrate, add equal volume of benzene or chloroform . Shake well . Separate the organic solvent. Add ammonia . Ammoniacal layer turns pink or red.

ii. Modified Borntrager's test: To 5ml extract, add 5ml 5% FeCl<sub>3</sub> and 5ml dil. HCl. Heat for 5min in boiling water bath. Cool and add benzene, shake well. Separate organic layer, add equal volume dil. ammonia . Ammoniacal layer shows pinkish red colour.

b) Test for saponin glycosides

iii. Foam test: Shake the drug extract vigorously with water. Persistent foam observed.[25]

4) Tests for alkaloids

a) Dragendorff's test :

To 2 to 3 ml extract, add few drops of Dragendorff's reagent .Orange- brown precipitate is formed.

b) Mayer's test:

To 2 to 3 ml extract with few drops Mayer's reagent gives precipitate.

c) Hager's test:

To 2 to 3 ml extract with Hager's reagent gives yellow precipitate.

d) Wagner's test:

To 2 to 3 ml extract with few drops Wagner's reagent gives reddish brown precipitate.[25]

5) Tests for flavanoids

a) Shinoda test :

To extract, add 5 ml 95% ethanol, few drops conc. HCl and 0.5g magnesium turnings.

Orange, pink, red to purple colour appears.

b) Sulphuric acid test:

To extract add 66% sulphuric acid, a deep yellow solution.

c) Lead acetate test:

To small quantity of the extract add lead acetate solution. An yellow colored precipitate is formed.[25]

6) Test for tannins

a) Ferric chloride test:

To 2 to 3 ml of aqueous extract, add 5% ferric chloride solution. A deepblue black colour.

b) Lead acetate test:

To 2 to 3 ml of aqueous extract, add lead acetate solution. A whiteprecipitate.

c) Bromine test:

To 2 to 3 ml of aqueous extract, add bromine water. Decolouration of bromine water.

d) Nitric acid test:

To 2 to 3 ml of aqueous extract, add dilute HNO<sub>3</sub>. A reddish to yellow colour.[25]

7) Test For Steroids

a) Salkowski test:

To 2ml of extract, add 2ml chloroform and 2ml conc H<sub>2</sub>SO<sub>4</sub>. Shake well. Chloroform layer appear red and acid layer shows greenish yellow fluorescence.[25]

**FORMULATION OF CREAM**

| SL NO: | INGREDIENTS     | OFFICIAL FORMULA (100g) | WORKING FORMULA (400g ) |
|--------|-----------------|-------------------------|-------------------------|
| 1      | Bees wax        | 16g                     | 64g                     |
| 2      | Liquid Paraffin | 50g                     | 200g                    |
| 3      | Borax           | 0.8g                    | 3.2g                    |
| 4      | Water           | 33.2g                   | 132.8g                  |
| 5      | Extract         | 0.5g                    | 2.0g                    |
| 6      | Perfume         | q.s.                    | q.s                     |

**Table 3: Formulation of Cream**



## PROCEDURE:

Cream was prepared by using fusion method. Whenever a cream consists of solid ingredient as component of the base, it is necessary to melt them. If the ingredient have different melting points , melting should be done in decreasing order of the melting point. This method is quicker and required less heat and avoids overheating of medicaments with low melting point. Medicaments are added slowly and stirred until the mass cools down completely and a

homogenous product is formed. Bees wax and liquid paraffin are melted to 75°C in a beaker by stirring. This is the oil phase. In another beaker borax and water are taken and heated to same temperature as the oil phase. Plant extract is added to the aqueous phase and mixed well. Aqueous phase is added to the oil phase and stir continuously until a homogenous product is formed. Finally, perfume is added and packed in a suitable container.[28]



Figure 3: E. Alsinoïdes Cream

## EVALUATION OF CREAM

- 1) Physical appearance: The physical appearance of the cream can be observed by its colour, odour and roughness.
- 2) Determination of pH: The pH of the cream can be measured on a standard digital pH meter at room temperature by taking adequate amount of the formulation diluted with a suitable solvent in a suitable beaker.
- 3) Spreadability: Adequate amount of sample is taken between two glass slides and a weight of 100gm is applied on the slides for 5 minutes. Spreadability can be expressed as,  $S = m \times l/t$

Where,

m = weight applied to upper slide.

l = length moved on the glass slide.

t = time taken.



4) Viscosity: Viscosity of formulated creams can be determined by using Brookfield Viscometer.

#### Principle:

Brookfield viscometers are often used within the sectors where accurate bench-top analysis of product viscosity is needed. These viscometers use the principle of 'rotational viscometry', i.e., their measurement of product viscosity is based upon immersing a specifically selected spindle within a sample of the product followed by measurement of the torque required to rotate the spindle at a set speed whilst immersed within the product sample. As the torque required will be proportional to the quantity of viscous drag upon the spindle, this therefore provides an assessment of the product viscosity, reported in centipoise units (cP).[29]

#### Procedure:

Sample was filled in a beaker without any air bubble entrapment. If any air bubbles get entrapped the readings may become very high than the original value. With the motor off attach the spindle by gently lifting up the coupling nut on the viscometer with one hand and screwing the spindle on with the other hand. Turn the gear knob to move the instrument up and down until the sample is level with the spindles immersion groove. After attaching spindle a spindle entry code must be entered. To enter the spindle entry code push the 'select spindle' button scroll using the up or down arrows to the correct spindle code and push the 'select spindle' button again to lock in the code. To set the speed scroll using the up/ down arrows to the speed of the choice and press the 'set speed' button. Press the motor on button to rotate the spindle. Here we used

spindle 4 and is rotated at 50 rpm for 15min. After 15 min



the reading is taken and noted.[29]

Figure 4: Brookfield Viscometer

- 4) Homogeneity: The formulation was tested for the homogeneity by visual appearance and by touch.
- 5) Removal: The ease of removal of the creams applied was examined by washing the applied part with tap water.
- 6) After feel: Emolliency, slipperiness and amount of residue left after the application of fixed amount of cream was checked.
- 7) Irritancy study: Mark an area of 1sq.cm on the left hand dorsal surface and then the cream was applied to the specified area and time was noted. Irritancy, erythema, edema was checked, for regular intervals upto 24hrs and reported.[3]

#### ANTIMICROBIAL ACTIVITY

##### Agar Well Diffusion Method

The disk diffusion method is used to determine the susceptibility of clinical isolates of bacteria to different antibiotics. An effective antibiotic will produce a large

zone of inhibition (disk C), while an ineffective antibiotic may not affect bacterial growth at all (disk A). Antibiotics to which a bacterial isolate is partially

susceptible will produce an intermediate size zone of inhibition (disk B).<sup>[31]</sup>

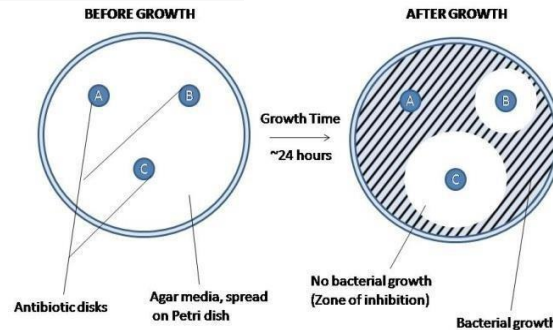


Figure 5: Agar Well Diffusion Method

### Principle:

The bacterial culture is suspended in a saline solution and its turbidity is standardized. Then the bacterial inoculum is uniformly spread on agar plate and then the antibiotic disk containing a defined concentration of antibiotic is applied. The antibiotic in the disk diffuses through the solid medium, so that the concentration is highest near the site of application and decreases gradually away from it. A well is made on the solid medium using a micropipette and the sample is introduced into it. The sample also diffuses through the medium similar to the antibiotic. Sensitivity is determined by the zone of inhibition of bacterial growth.<sup>[31]</sup>

### Procedure:

#### Medium preparation

Muller-Hinton Agar (MHA) is considered as the best medium to use for routine susceptibility testing of bacteria because it shows acceptable batch-to-batch reproducibility for susceptibility testing.

Composition of Muller-Hinton agar includes:

- HM infusion B from\* - 300.00 Gms/litre
- Acicase- 17.50 Gms/litre
- Starch - 1.50 Gms/litre
- Agar - 17.00 Gms/litre Final pH (at

25°C) – 7.3±0.1

\*Equivalent to beef infusion

Directions: Suspend 38 g in 1000ml of purified/distilled water. Heat to boiling to dissolve the medium completely. Sterilize by autoclaving at 15lbs pressure (121°C) for 15 minutes. Cool to 45-50°C. Mix well and pour into sterile petri plates.

#### Culture preparation

The organisms are isolated in pure culture on a solid medium. Isolated colonies are inoculated in a suitable broth medium (peptone water) and incubated at 35-37°C for 1-2 hours or continue to the process until the medium is turbid. Composition of peptone water include:

- Peptone - 10g
- Sodium chloride - 5g
- Distilled water-1000ml

Culture of both gram positive (Staphylococcus aureus) and gram negative (Escherichia coli) was prepared for this study. [30]

#### Inoculation

Inoculation is the process of introducing an organism or a disease-causing pathogen into a culture medium. The inoculation method mostly used for sensitivity testing is lawn culture method. Lawn culture medium is prepared by uniform spreading of bacterial culture

on the solid medium using a cotton swab. Lawn culture provides a uniform surface growth of the bacterium.



Figure 6: Lawn Culture

- A well is then made on the culture medium using micropipette and sample is introduced into it.
- An antibiotic disc (Gentamicin) is placed parallel to the well.
- The medium is incubated for 24 hours and antimicrobial sensitivity is determined using zone of inhibition.

The leaves of *Evolvulus alsinoides* were collected and authenticated. Then the leaves were dried and the dried powdered crude drug was extracted using water as the solvent. The extractive value was calculated and found to be 12.5% *w/w*. The phytochemical screening of the extract was carried out and it was found to contain carbohydrates, proteins, glycoside, alkaloids and tannins as shown in table no.5:

### RESULT AND DISCUSSION

| SL.NO: | TEST          | INFERENCE |
|--------|---------------|-----------|
| 1      | Carbohydrates | +         |
| 2      | Proteins      | ++        |
| 3      | Glycosides    | ++        |
| 4      | Alkaloids     | +++       |
| 5      | Flavonoids    | –         |
| 6      | Tannins       | +++       |
| 7      | Steroids      | –         |

Table 4: Preliminary phytochemical screening

- Strongly present +++ Present ++ Weekly present + Absent –



Cream was prepared by the fusion method. Then it was evaluated for its physical features (colour, odour, texture), pH, viscosity, homogeneity, consistency,

after feel, irritancy and spreadability. The results are shown in table no. 6:

| SL NO. | PARAMETER  | OBSERVATION   |
|--------|--|---|
| 1      | Physical appearance<br>a) Colour<br>b) Odour<br>c) Texture | Light brown or cream<br>Characteristic odour Smooth         |
| 2      | pH   | 5.58  |
| 3      | Viscosity  | 13254 mpas (15 min at 50 rpm using spindle 4)               |
| 4      | Homogeneity<br>a) By visual<br>b) By touch                 | Homogenous<br>Smooth and consistent                         |
| 5      | Removal  | Washable  |
| 6      | Consistency  | Good  |
| 7      | After feel   | Smooth, non- slippery and no residue left after application |
| 8      | Irritancy  | No irritations  |
| 9      | Spreadability  | 17  |

**Table 5: Evaluation of Cream**

Antimicrobial activity of the cream against gram - negative and gram- positive organism was evaluated

by agar well diffusion method, using Gentamicin as the standard reference drug. The antibacterial activity was

measured individually and compared the zone of inhibition of sample (E. alsinoides cream) against

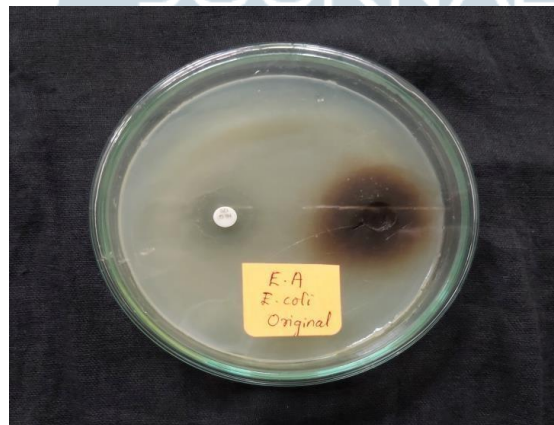
standard (Gentamicin antibiotic). The results are shown in table no.7:

| ORGANISM                              | ZONE OF INHIBITION |          |
|---------------------------------------|--------------------|----------|
|                                       | SAMPLE             | STANDARD |
| Staphylococcus aureus (Gram positive) | 28mm               | 37mm     |
| Escherichia coli (Gram negative)      | 34mm               | 21mm     |

Table 6: Observation of Anti-Microbial Activity



Figure 7: Zone of Inhibition Against S. Aureus





**Figure 8: Zone of Inhibition Against E. coli**

The result shows that cream has antibacterial activity against both gram positive and gram-negative organisms. In case of E. coli, the zone of inhibition produced by sample was more than that of the standard. Thus, gram - negative bacteria (E. coli) show more sensitivity to the cream compared to gram-positive bacteria (S. aureus).

### CONCLUSION

The traditional methodologies utilized a wide variety of medicinal herbs for various treatment and *Evolvulus alsinoides* is one of the notable herbs among them. As it is widely available it has been employed for clinical use from centuries. The present study concludes that the cream prepared from the aqueous extract of *Evolvulus alsinoides* have the anti-microbial activity against both gram- positive *Staphylococcus aureus* and gram - negative *Escherichia coli* and among them more activity is shown against the gram - negative organism. Thus, the anti-microbial activity of *Evolvulus alsinoides* indicates the therapeutic potential for the treatment of various infectious diseases and supports the traditional use of medicinal herb. Since the plant extracts present various components like carbohydrates, proteins, glycoside, tannins, alkaloids etc. therefore, at this stage, it is difficult to say which components are responsible for antimicrobial activity and it requires further phytochemical studies to isolate the active components. Responsible for the pharmacological activities. Hence, medicinal plant extract and formulations made from it could be an answer to those people who needs better therapeutic agents from natural sources which are more efficient with no or little side effects when compared to other synthetic agents. Further clinical studies are required to validate

the efficacy of this medicinal plant against various strains of bacteria.

### REFERENCES

1. Ashok D B Vaidya, Thomas P A Devasagayam. Current status of herbal drugs in India: an overview.PMC( US National library of medicine, national institute of health).2007 July;41(1):1-11.
2. Nikhil Nithin Navindigkar , K A Kamalapurkar, Prasant S Chavan.Formulation and evaluation of multipurpose herbal cream. International Journal of Current Pharmaceutical Research.2020 march 23;12(3):25-30.
3. Chauhan Lalita, Salini Gupta.Creams: A review on classification, preparation methods, evaluation and its applications. Journal of drug delivery and therapeutics.2020 oct;10(5):281-289.
4. *Evolvulus alsinoides*.Wikipedia.[https://en.wikipedia.org/wiki/Evolvulus\\_alsinoides](https://en.wikipedia.org/wiki/Evolvulus_alsinoides),feb2022.
5. Frantisek Cervenka,VitKoleckar,ZuzanaRehakova, etal.Evaluation of natural substances from *Evolvulus alsinoides* L. with the purpose of determining their antioxidant potency.Journal of Enzyme Inhibition and Medicinal Chemistry. 2008;23(4):45-56.
6. Mukesh Kumar Yadav, Santosh Kumar Singh and Yamini BhusanTripathi.Neuroprotective Activity of *Evolvulus alsinoides*&*Centella asiatica* Ethanolic Extracts in Scopolamine-Induced Amnesia in Swiss Albino Mice.Open Access Macedonian Journal of Medical Sciences; 2019 Apr 15; 7(7): 1059–1066.



7. Bharathi Kathirvel, Syed I Kalibulla, Velayuthaprabhu Shanmugam, et al. A review on the pharmacological properties of *Evolvulus alsinoides* (Linn). *Journal of Indian System of Medicine*. 2021; 9(3):153-160.
8. Duraisamy Gomathi, Manokaran Kalaiselvi, Chandrasekar Uma et al. Secondary metabolite credentials of *Evolvulus alsinoides* by high performance thin layer chromatography (HPTLC). *Journal of Biomedical Research, Nanjing Medical University Press*. 2012 Jul; 26(4): 295–302.
9. Murugan Ponselvi Induja, Devaraj Ezhilarasan, and Nandigam Ashok Vardhan. *Evolvulus alsinoides* methanolic extract triggers apoptosis in HepG2 cells. *Avicenna Journal of Phytomedicine, Mashhad University of Medical Sciences*. 2018 Nov-Dec; 8(6): 504–512.
10. Saraswathy Palanisamy and U. M. Dhana Lekshmi. The effects of methanolic and aqueous extract of *Evolvulus alsinoides* on clinical isolates. *Journal of Pharmaceutical and Biomedical Sciences*. 2011 Jan; 9(10):62-71.
11. Isa ZA, Garba SH. Effects of the Aqueous Extract of *Evolvulus alsinoides* Linn on Sperm Parameters and the Histology of the Testis in Adult Wistar Albino Rats. *Scholars Journal of Applied Medical Sciences (SJAMS)*. 2017; 5(9D):3748-3754.
12. Omogbai, b. A. & Zeze, f. A. Phytochemical screening and susceptibility of bacteria pathogens to extracts of *Evolvulus alsinoides*. *Science World Journal*. 2011; 6(1):99-115.
13. Pavithra Mettupalayam, Kaliyannan Sundaramoorthy & Kannan Kilavan Packiam. In vitro enzyme inhibitory and cytotoxic studies with *Evolvulus alsinoides* (Linn.) Leaf extract: a plant from Ayurveda recognized as *Dasapushpam* for the management of Alzheimer's disease and diabetes mellitus. *BMC Complementary Medicine and Therapies*. 2020; 20(129):89-96.
14. Praseon Gupta, Akanksha, Kiran Babu Siripurapu, et al. Anti-stress Constituents of *Evolvulus alsinoides*: An Ayurvedic Crude Drug. *Chemical and pharmaceutical bulletin*. 2007; 55(5):771-775.
15. *Evolvulus alsinoides* Linn; Ethnobotanical leaflets. *Academic medicines*. 2008; 5 (1):100.
16. Frantisek Cervenka, Vit Koleckar, Zuzana Rehakova et al. Evaluation of natural substances from *Evolvulus alsinoides* L. with the purpose of determining their antioxidant potency. *Journal of Enzyme Inhibition and Medicinal Chemistry*. 2008; 23 (4): 574-578.
17. Anitha P. Ambika and Sreesha N. Nair. Wound Healing Activity of Plants from the *Convolvulaceae* Family. *National library of medicine*. 201 Jan 1; 8(1): 28–37.
18. Kannan Elangovan, Kumar Supriya, Kandhasamy Murugesan et al. Screening of phytochemicals and in vitro antioxidant activity of *Evolvulus alsinoides* L. *J Acad Industr*. 2013; 2(4): 230-234.
19. Pavithra M.K.S., Meena Deviha S., Sowmya R et al. Studies on the antimicrobial activity of *Evolvulus alsinoides*, *murrayakoenigii*, *lawsoniainermis*, *hibiscus rosa-sinensis*, *azadirachta indica* against *malassezia furfur* using fractional factorial design. *International Journal of Research in Ayurveda and Pharmacy*. 2016 January; 7(1):73-77.
20. Cleidson Valgas, Simone Machado de Souza, Elza F A Smânia, et al. Screening methods to determine antibacterial activity of natural products. *Brazilian Journal of Microbiology*. 2007; 4(38):369-380.





21. R Perumal Samy, S Ignacimuthu. Antibacterial activity of some folklore medicinal plants used by tribals in western ghats in India. *Journal of ethnopharmacology*. 2000 January; 69(1):63-71.
22. Mei X. Chen, Kenneth S. Alexander, Gabriella Baki. Formulation and evaluation of anti bacterial creams and gels containing metal ions for topical application. *Journal of pharmaceutics*. 2016 Nov 3; 55(1): 10-13.
23. Faraja D. Gonelimali, Fedrick Charles, Jiheng Lin, et al. Antimicrobial properties and mechanism of action of some plant extracts against food pathogens and spoilage microorganisms. *Frontiers in microbiology*. 2018 July 24; 16(39):42-57.
24. Dr. K R Khandelwal, Dr. Vrunda Sethi. *Practical Pharmacognosy*. Nirali Prakashan. 2014 Aug; 1(24):25.1 – 25.6.
25. N N Azwanida. A review on the extraction method used in medicinal plants, principles, strength and limitation. *Med aromat plants*. 2015; 4(196):2167-2412.
26. J Azmir, M M Rahman, A K M Omar, et al. Techniques for extraction of bioactive compounds from plant materials: A review. *Journal of food engineering*. 2013; 117(4):426-436.
27. *Indian pharmacopeia*, 1966; 2(2):1072.
28. M Swainson, L. McWatt. *Viscometers*. Science direct. 2010; 2(1):12-15.
29. Apurba S Sastry, Sandhya Bhat. *Essentials of medical microbiology*. Jaypee brothers medical publishers. 2019; (2):90-93.
30. Joanne M Willey, Linda M Sherwood, Christopher J oolverton. *Microbiology*. Prescott. 2020; (8):830-832.
31. R Ananthanarayanan, C K Jayaram Paniker. *Text book of Microbiology*. Universities press. 2017; (10):39-41.
32. N K Jain. *Pharmaceutical Microbiology*. Vallabh Prakashan. 2005; (2):95-98.
33. K Sampath. *A concise book of cosmetic*. Birla publications. 2009-2010; (3):9-17.
34. C P Baveja. *Practical Microbiology*. Arya publications. 2012; (3):127-129.
35. B M Mithal, R N Saha. *A handbook of cosmetics*. Vallabh Prakashan. 2000; (1): 61-64
36. James Cappuccino, Natalie Sherman. *Microbiology A laboratory manual*. Pearson. 2014; (1):14-23.
37. Mohammed Ali. *Text book of Pharmacognosy*. CBS publishers and distributors. 1998; (2):5
38. William Charles Evans. *Treas and Evans Pharmacognosy*. Elsevier. 2009; (16):5-8.
39. A N Kalia. *Text book of industrial Pharmacognosy*. CBS Publishers and distributors. 2005; (1):76-80.
40. Ashutosh Kar. *Pharmacognosy and pharmacobiotechnology*. New age international publishers. 2007; (2):56-63.
41. Biren Shah, A K Seth. *Textbook of Pharmacognosy and phytochemistry*. CBS Publishers and distributors. 2014; (2):34-37.
42. C K Kokate. *Practical Pharmacognosy*. Vallabh Prakashan. 2014; (5):108-112.
43. N P S Sengar, Ritesh Agarwal, Ashwini Singh. *A textbook of Pharmacognosy*. Pharma med press. 2014; (1):21-38.
44. G. K. Dash, P. Suresh, S. K. Sahu, et al. Evaluation of *Evolvulus alsinoides* Linn. for anthelmintic and antimicrobial activities. *Journal Of Natural Remedies*. 2022; 2(2):12-185.



45. Daniel F.Austin. *Evolvulus alsinoides* (Convolvulaceae): An American herb in the old world. *Journal of ethnopharmacology*.2008 May.117(2):185-198.
46. Alok Nahata, U. K. Patil, V. K. Dixit. Effect of *Evolvulus alsinoides* Linn. on learning behavior and memory enhancement activity in rodents. *Phytotherapy Research*.2009 July.29(3).123-126.
47. U M Dhanalekshmi, G Poovi, et al. Evaluation of wound healing potential and antimicrobial activity of ethanolic extract of *Evolvulus alsinoides*. *Research gate*.2010 Jan;4(3):45-49.
48. Polya G. Biochemical targets of plant bioactive compounds:a pharmacological reference guide to sites of action and biological effects.CRC press; 2003;3(5):4-9.
49. Ponselvi Induja M, Ezhilarasan D, Ashok Vardhan N. *Evolvulus alsinoides* methanolic extract triggers apoptosis in HepG2 cells. *Avicenna J Phytomed*. 2018;8:4-12.
50. Vardhan.*Evolvulus alsinoides* methanolic extract triggers apoptosis in HepG2 cells.*Avicenna Journal of Phytomedicine*, Mashhad University of Medical Sciences. 2018 Nov-Dec; 8(6): 504–512.

